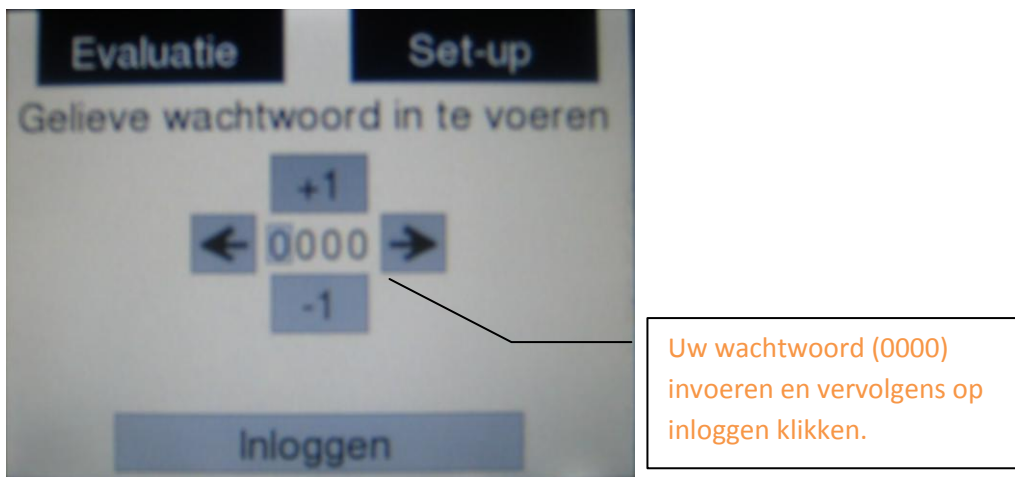
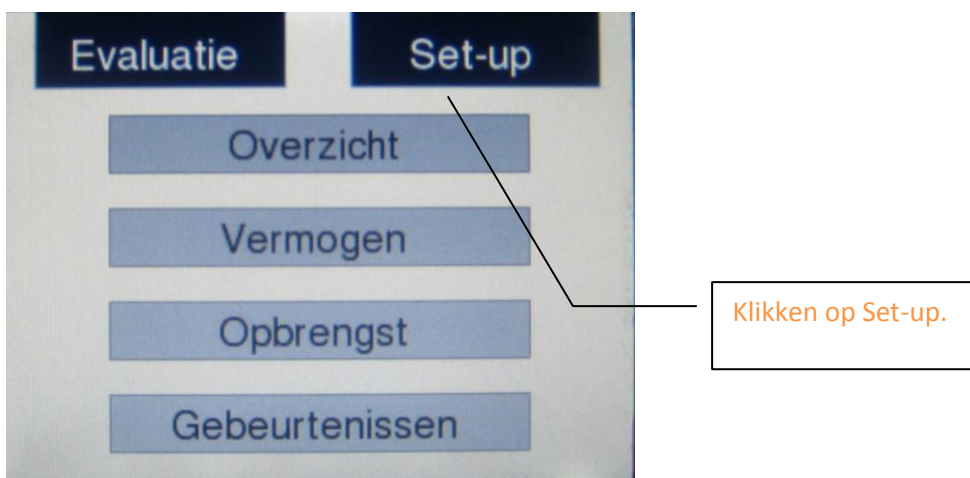


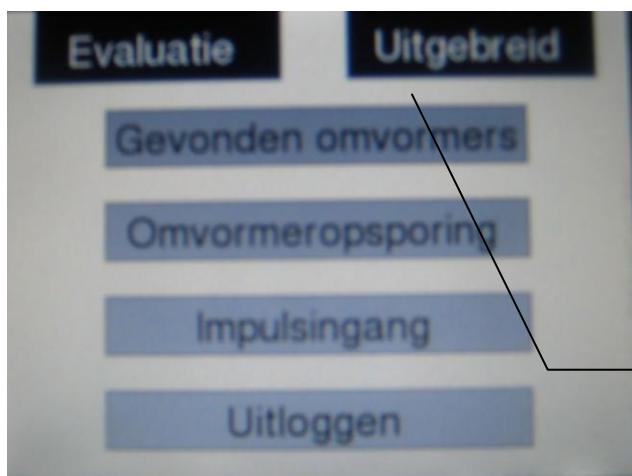
## Updaten van de sunalyzer

Updaten van de sunalyzer zorgt ervoor dat het toestel steeds voorzien is van de nieuwste software, deze software wordt regelmatig aangepast door Schüco. Dit zorgt voor nieuwe opties, verbeteringen aan de interface, ...

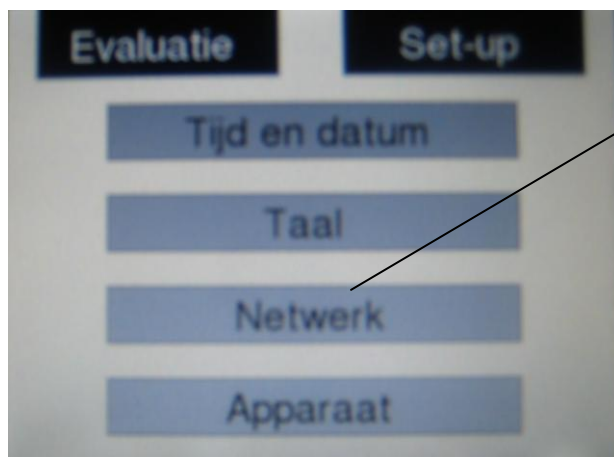
### Werkwijze:

We gaan even controleren op welk IP-adres de sunalyzer staat, dit doen we als volgt:

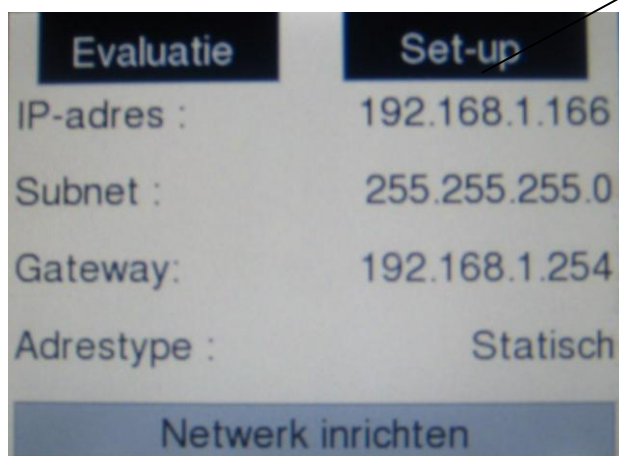




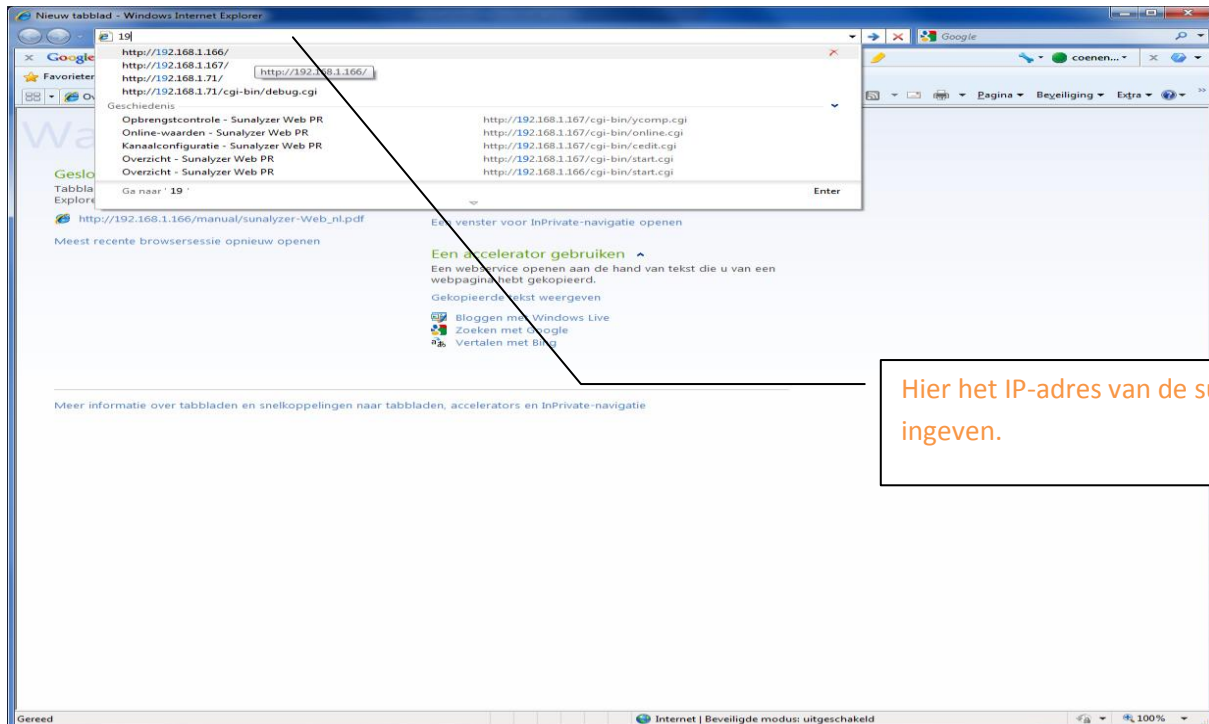
Uitgebreid



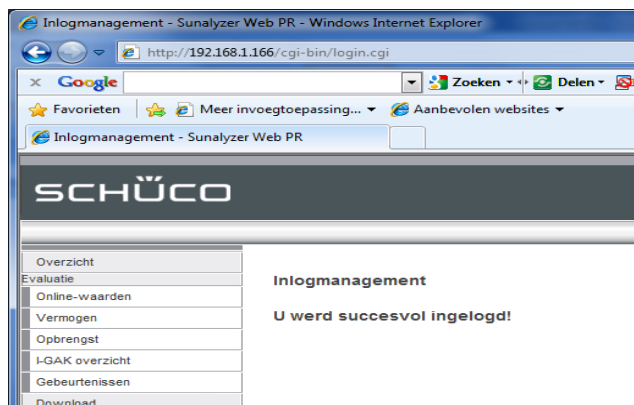
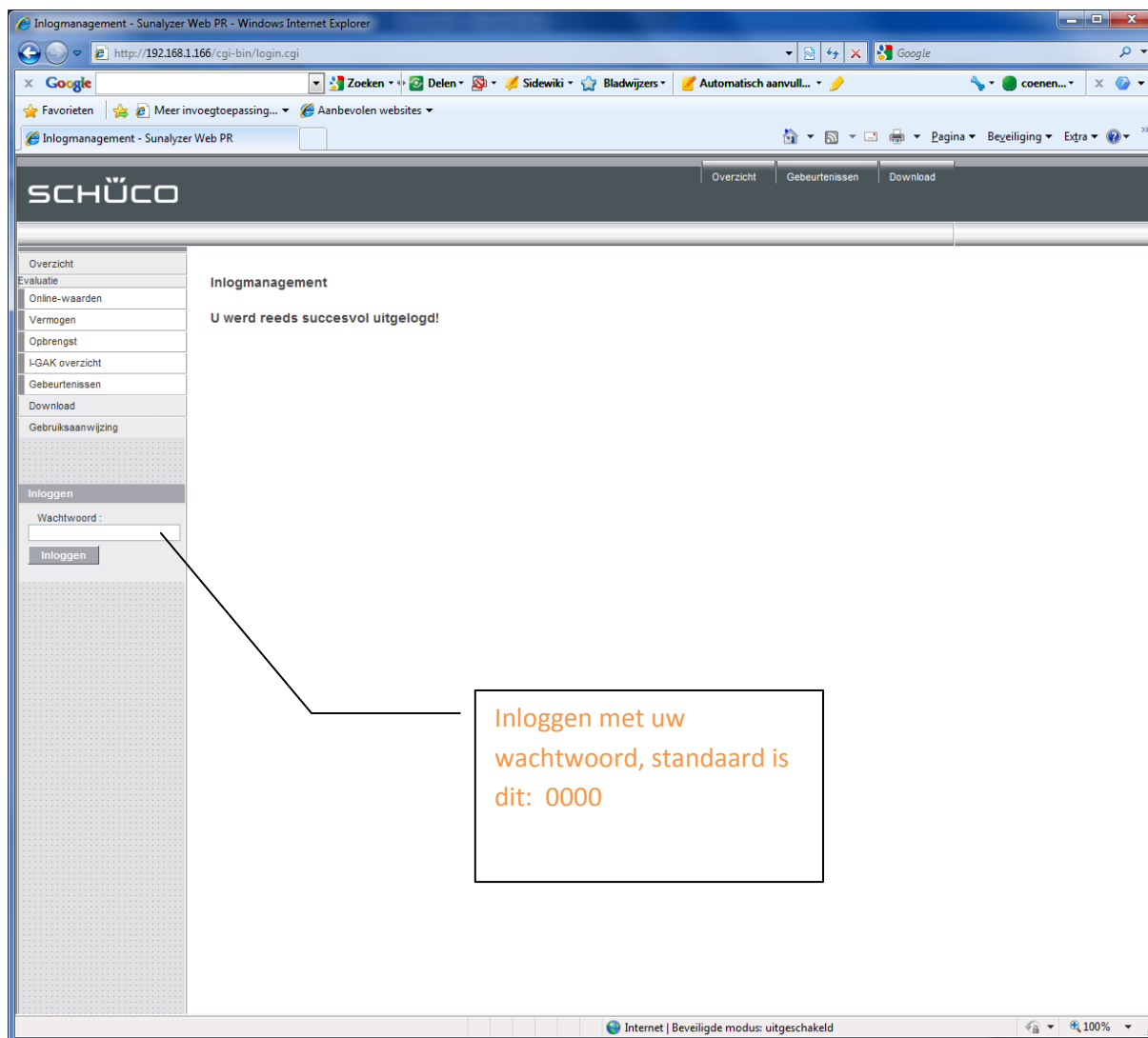
Netwerk

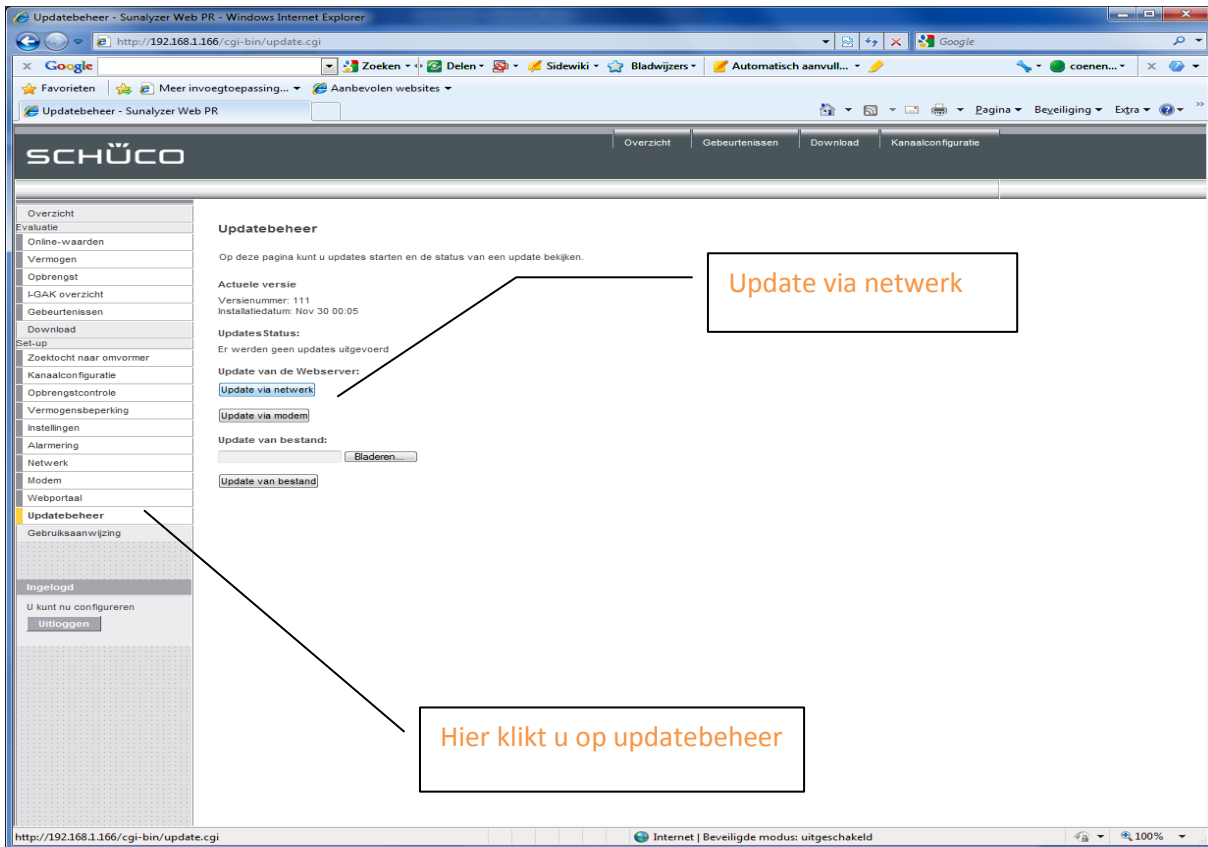


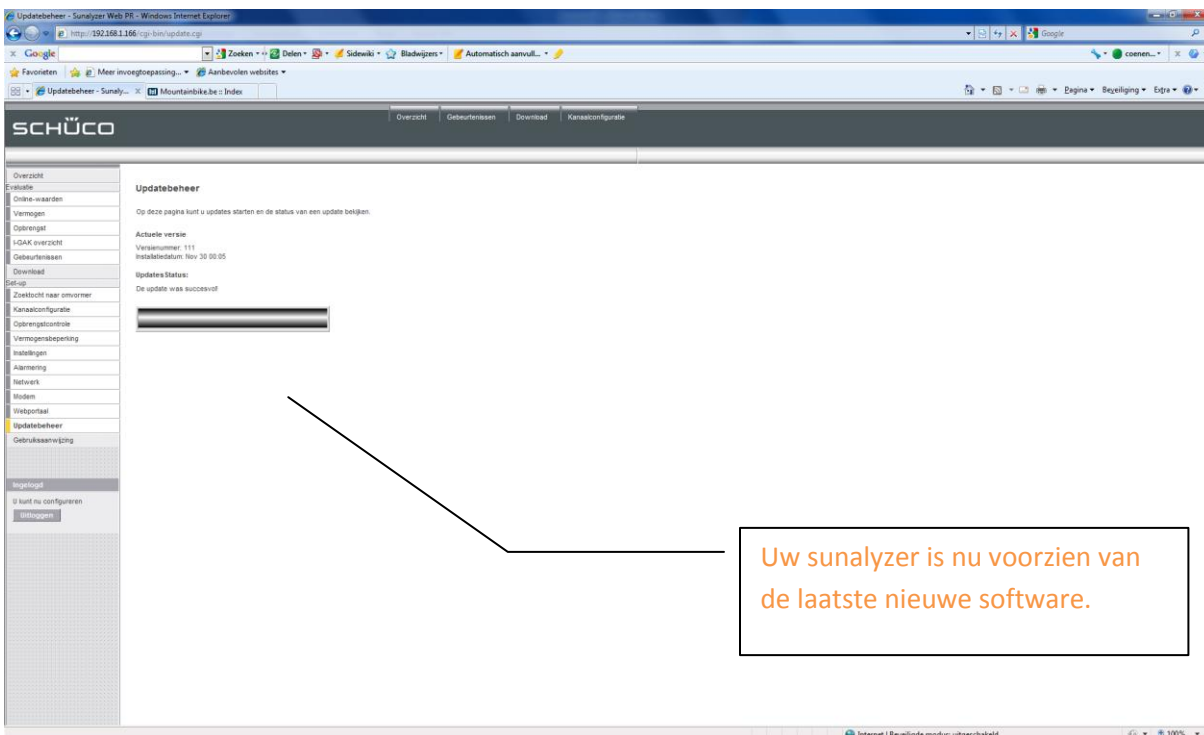
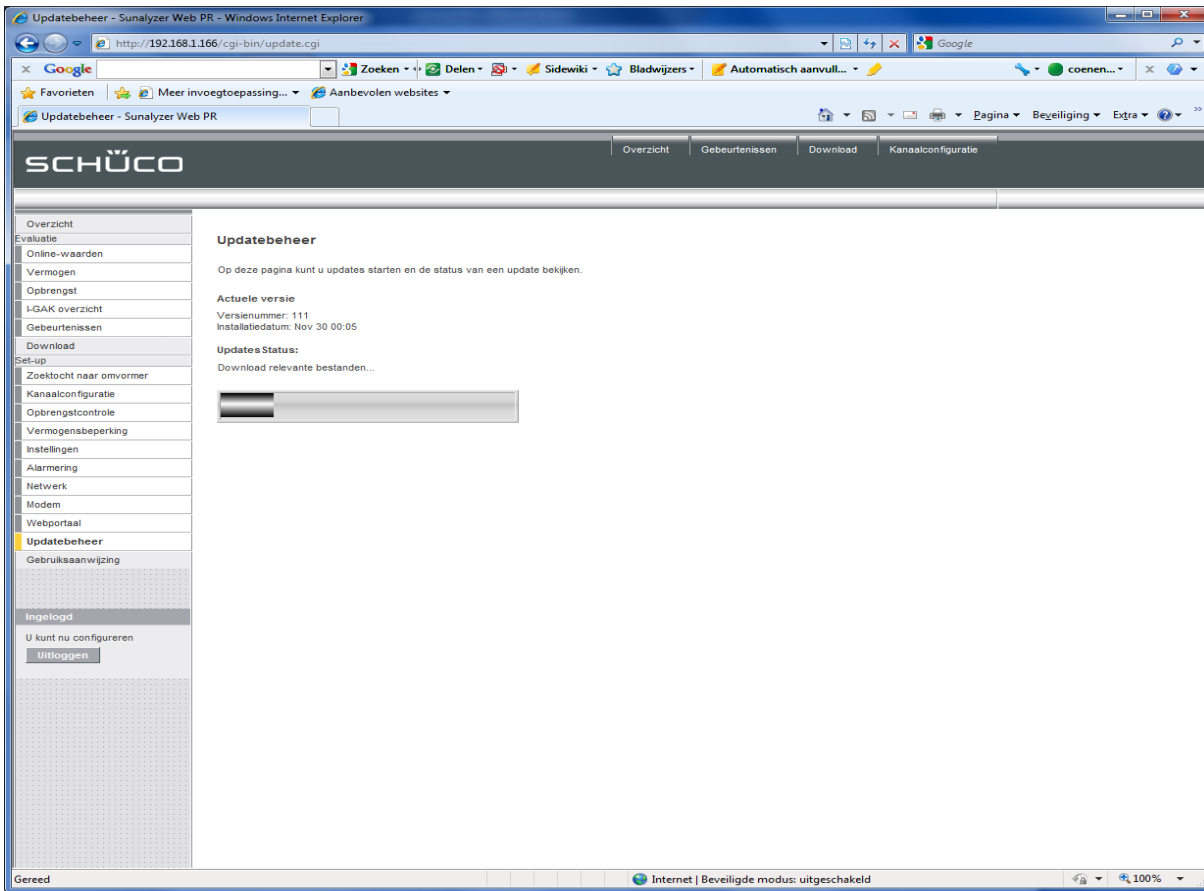
Dit IP-adres moet u gaan ingeven in uw internet explorer.



Hier het IP-adres van de sunalyzer ingeven.







Uw mag nu de browser afsluiten, de sunalyzer is voorzien van de nieuwe software.